

Land for Sale

Woodstock Estates

1950 State Rt 17B, Bethel NY

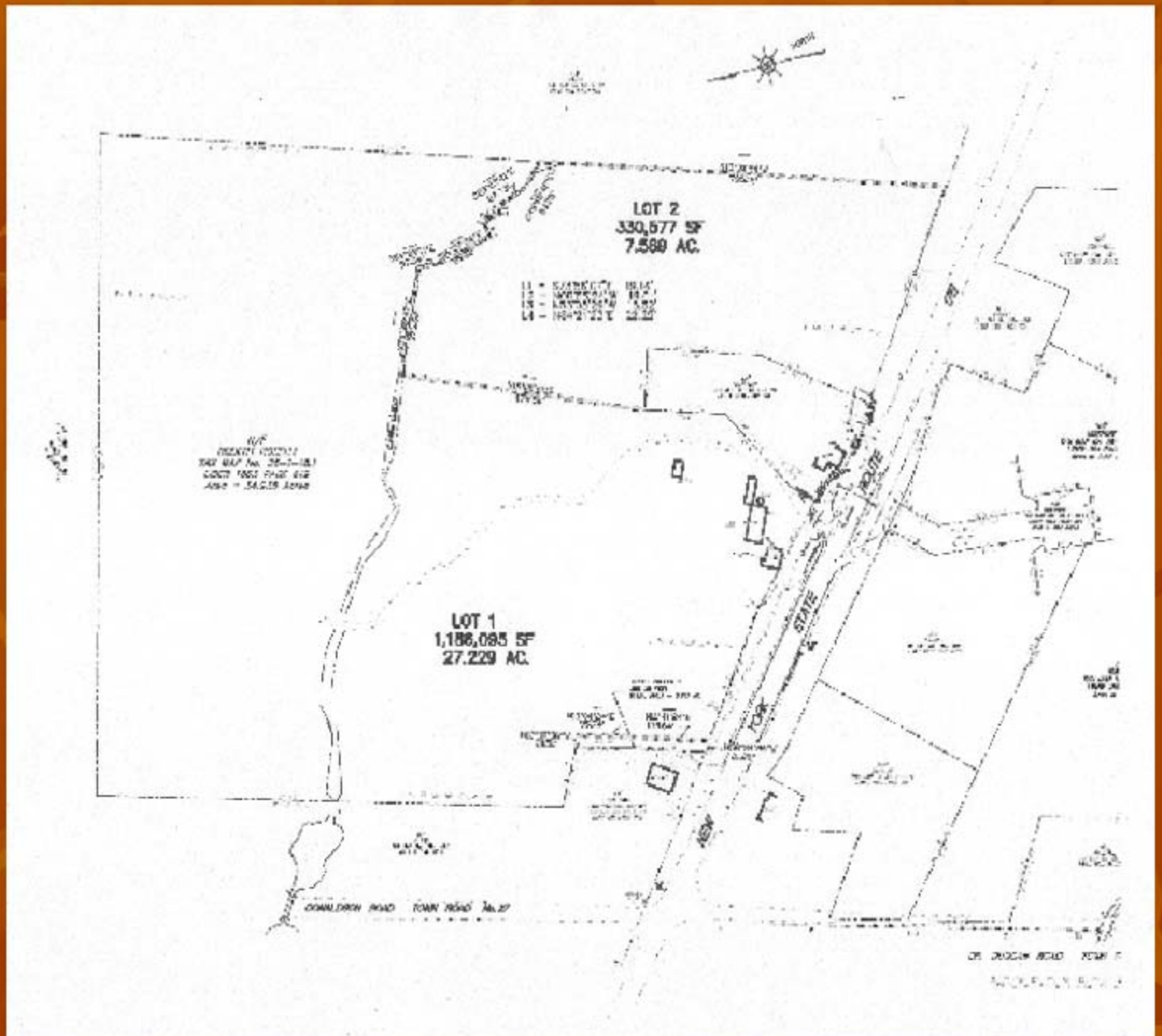
35 Acre-Land Close To Bethel Woods Performing Arts Center & Part Of Woodstock Estates Subdivision. Located In Bethel NY, On NYS Rt. 17B. Zoned for Gateway Commercial With Municipal Sewer. Located in the Lower Catskills and only 100 miles from NYC. Just One mile from the Original Woodstock Festival and now the home of the Bethel Woods Performing Arts Center. Current topographic and boundary survey. Preliminary engineering, Land already subdivided with commercial strip mall, hotel, and residential possibilities. Diverse property and great location to support all three. Leasing options available



Upstate Development LLC
PO BOX 837
Mahwah, NJ 07430
Phone: 201-993-0781
Email: info@upstatedevelopment.com
Website:
www.upstatedevelopment.com

Sale	Please inquire – lots can be sold individually or whole property
Zoning	Agriculture, & Gateway Commercial
Size	35 Acre (Sub-division potential)
Tax Map	26-1-18.1 & 26-1-18.2
Road Front Description	State Highway Frontage with Public Sewer Access.
Buildings on Property	Barn, House, & Silo
Added Features;	Preliminary engineering, Perced, flagged wetlands

Woodstock Estates Subdivision-Map



Upstate Development LLC
PO BOX 837
Mahwah, NJ 07430
Phone: 201-993-0781
Email: info@upstatedevelopment.com
Website: www.upstatedevelopment.com

Regional Map



Upstate Development LLC

PO BOX 837

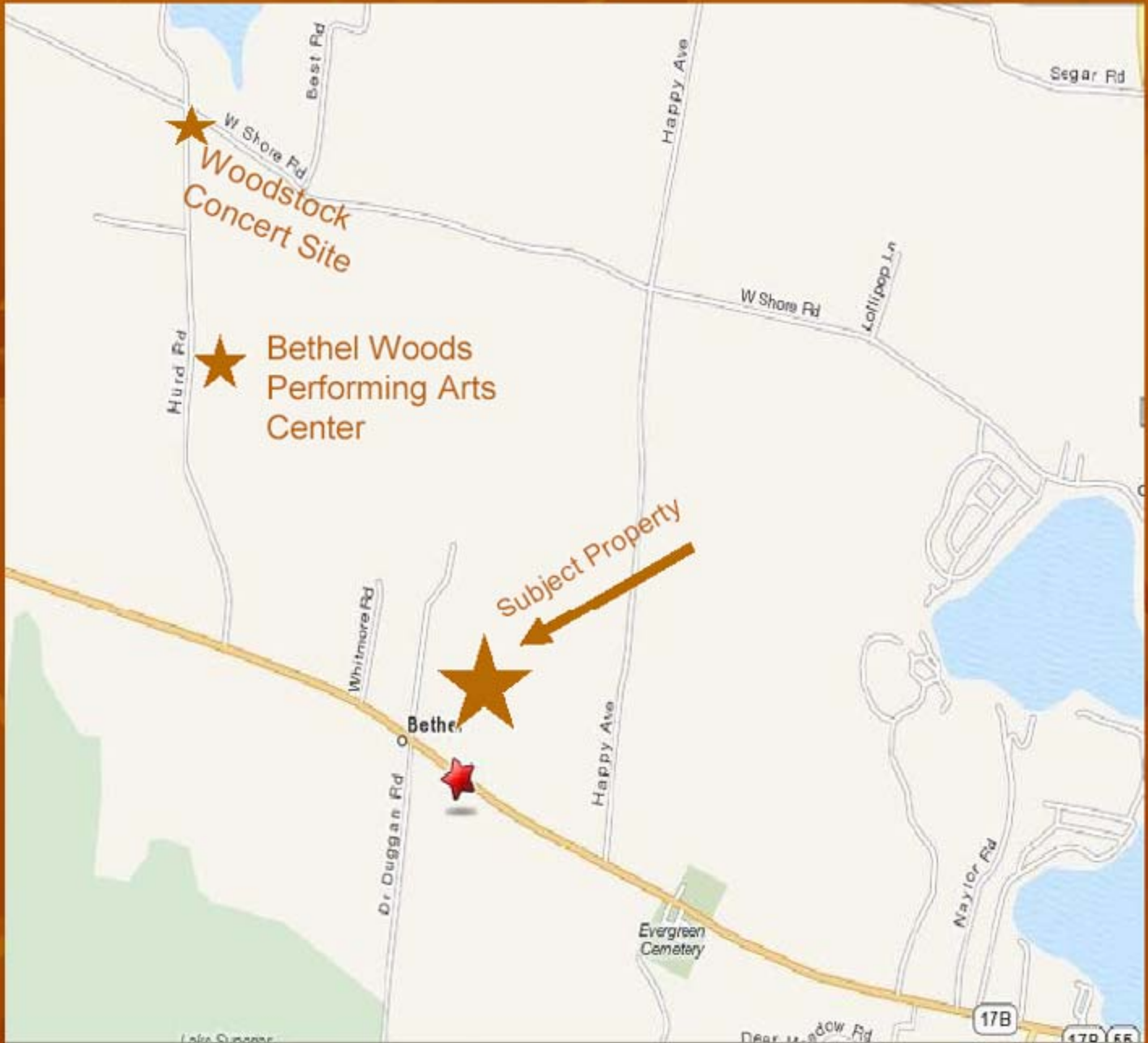
Mahwah, NJ 07430

Phone: 201-993-0781

Email: info@upstatedevelopment.com

Website: www.upstatedevelopment.com

Location Map



Upstate Development LLC
PO BOX 837
Mahwah, NJ 07430
Phone: 201-993-0781
Email: info@upstatedevelopment.com
Website: www.upstatedevelopment.com

Property Photos



Possible Hotel Site



Highway 17B
Frontage-
Looking East
(showing house
and barn on
property)

Interior Access
Roadway Requires
Minimal Clearing &
Grading



Property Photos



North-West Corner –Possible Residential Site



View East from
North-West
Corner

Stream Splits
Property



Upstate Development LLC
PO BOX 837

Mahwah, NJ 07430

Phone: 201-993-0781

Email: info@upstatedevelopment.com

Website: www.upstatedevelopment.com